



RLS and QRS Live Roller Conveyors

RLS straight roller conveyors are single-sprocket rollers driven by a tangential belt running on a special wear-resistant support. They are used for small, light to medium weights applications. The QRS curved live rollers are 90-degrees curved conveyors used in conjunction with the RLS straight roller conveyors, and use conic rollers. They can be self-powered or can derive their power from the following roller conveyor.

Factory :New Borg El Arab 2nd Zone
entrance 2c street 3 - entrance 2c street 5
Tel:+20-(03)-4624127 - 4624126 - 4624025
fax : (03) 4624291

Info@UnitelEgypt.com

Cairo Office : Corniche El Nile, Maadi, Cairo
Tel +20:(0)2-25266333
Fax +20:(0)2-25264888

Sales@UnitelEgypt.com



www.UnitelEgypt.com



[/UnitelEgypt](https://www.facebook.com/UnitelEgypt)

RLS and QRS Live Roller Conveyors

Features

RLS roller conveyors offer cost effective, safe and reliable handling of any goods with a suitable contact surface and feature galvanized rollers mounted on a precision made frame. Rollers are driven by a tangential chain running on special wear resistant UHMWPE tracks.



Characteristics

The RLS family of conveyors uses special R50 or R60 rollers, fitted with single drive sprockets and female threaded shafts.

A tangential chain running on a special wear resistant profile drives the rollers.

The heavy duty precision side frames are made of heavy gauge sheet metal.



Applications.

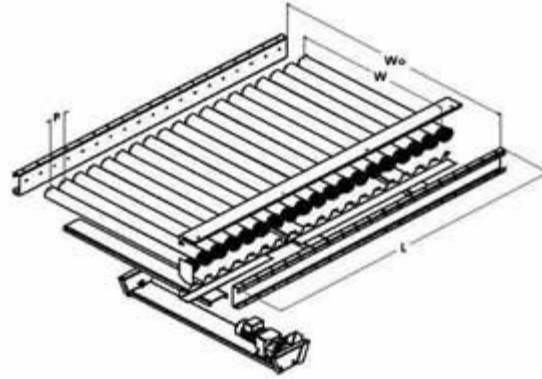
These conveyors are used for transporting unit goods such as boxes, cartons, crates, or any item with a solid flat contact surface.

These conveyors are not recommended for applications where excessive accumulation occurs, i.e. forcing the transported item to stop. While the rollers are still running.



RLS and QRS Live Roller Conveyors

RLS Specifications



Loading Capacity	14,000 N/m
Pulley Diameter	50 or 60 mm.
Roller Pitch	90 mm.
Chain Type	8B-1
Pulley Type	R50SS- R60SS
Sprocket	14 teeth
Linear Speed	15 m/min
Mains Supply	380 VAC +/-10%, 50 Hz 3 Phase
Motor Power	0.375 kW ~ 1.1 kW depending on load and conveyor length.
Motor Class	IP54
Insulation Class	IP54
Paint	Electrostatic Epoxy Powder RAL 5017 (blue)

Dimensions

Standard Width (W) / *Preferred Values*

Outer Distance (Wo)

W	500	650	1200
Wo	615	765	1315

QRS Curved Live Roller Conveyor

Features

The QRS driven roller conveyors feature a special conic roller specifically designed for this application.

Rollers are driven by chains and the angular velocity of any point along the roller is constant.

Characteristics

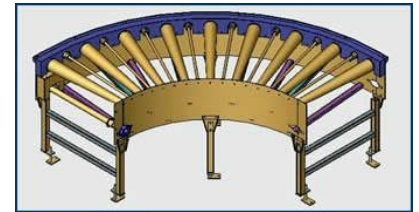
QRS conveyors are usually wider than the width of the items being transported. The conveyor width is a function of the length and width of the conveyed part. To select a suitable width, refer to the chart entitled Curved Conveyors

Due to their design characteristics, items entering the conveyor effectively rotate around the center point of the conveyor and emerge with their axis aligned to the direction of travel.

Applications.

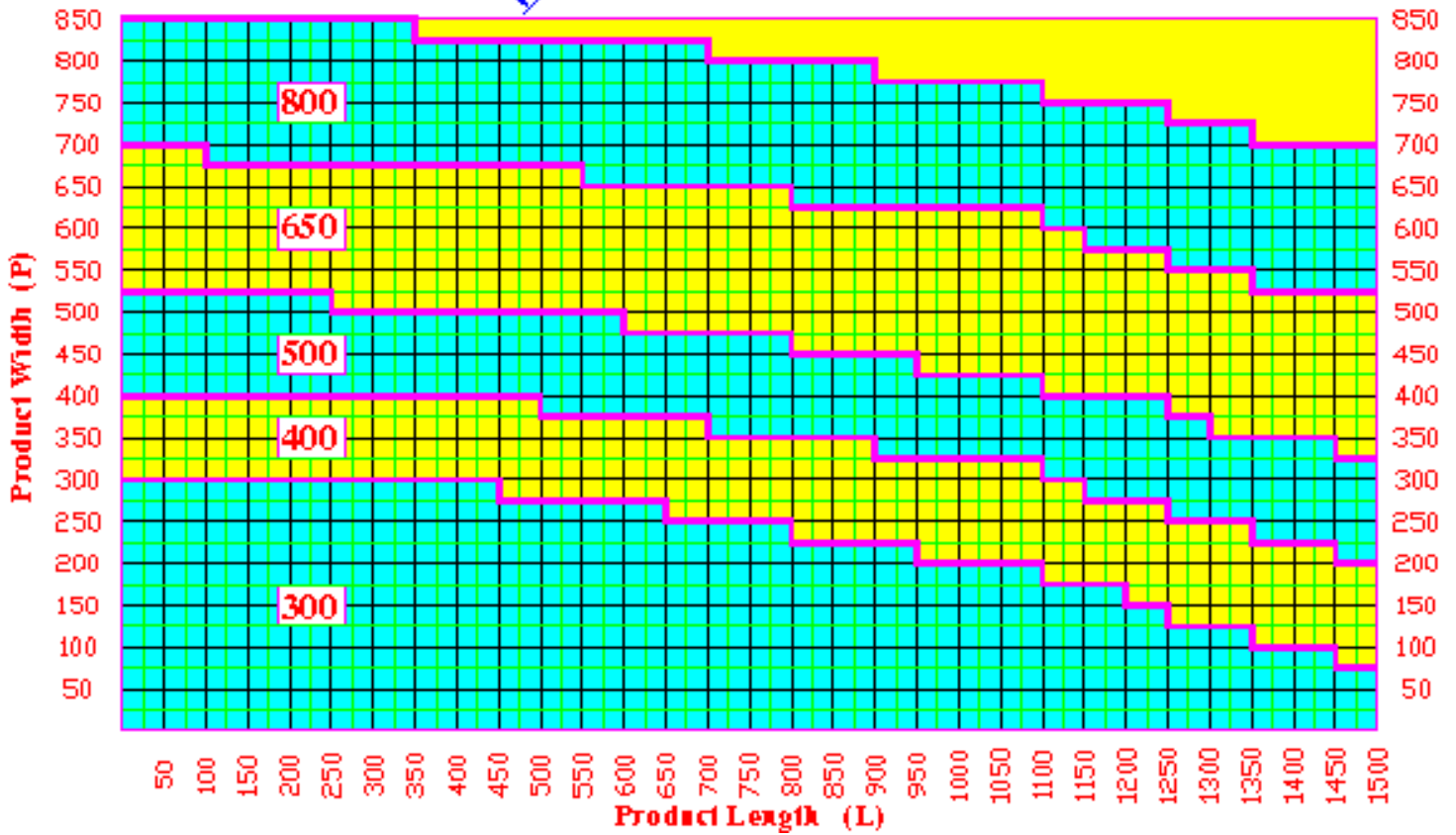
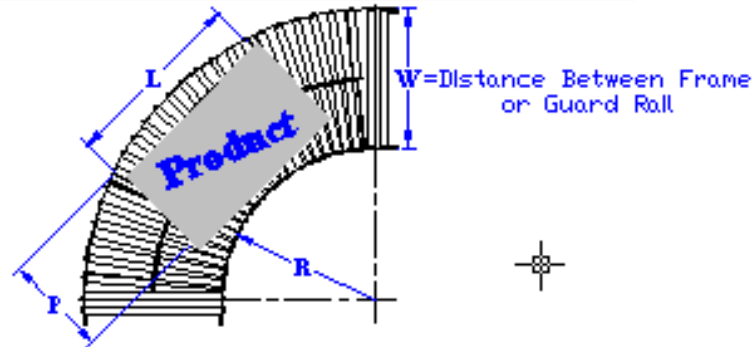
QRS conveyors are particularly suitable for use in assembly lines, or warehouses. The surface of the conveyed item must be smooth and easily transported by rollers, for example: pallets, cartons, boxes etc...

These conveyors are not suitable for handling sacks, or items with soft lower surfaces.



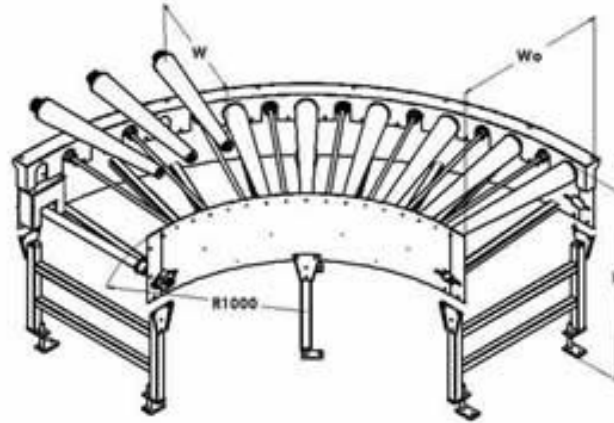
QRS Curved Live Roller Conveyor

Conveyor Width Selection Chart 2



QRS Curved Live Roller Conveyor

QRS Specifications



Loading Capacity	Up to 2,000 N/m
Angle Covered	90 Degrees
Roller Shape	Inclined Conical
Minimum Roller Diameter	60 mm.
Chain Type	8B-1
Linear Speed	3 ~ 6 m/min
Mains Supply	380 VAC +/- 10%, 50 Hz, 3 Phase.
Motor Power	0.37 kW ~ 1.1 kW Depending on Load.
Motor Class	IP54
Insulation Class	IP54
Roller Materials	UHMWPE
Paint	Electrostatic Epoxy Powder paint RAL 5017 (blue)

Dimensions

Standard Width (W) / Preferred Values

W	500	650	800	1000	1400
---	-----	------------	-----	------	------

مكتب القاهرة : برج القانوتيين كورنيش المعادى
تليفون : ٢/٢٥٢٦٦٣٣٣
فاكس : ٢/٢٥٢٦٤٨٨٨

مدينة برج العرب الجديدة - المنطقة الصناعية الثانية
يونيتل/ مدخل ٢ ج شارع ٣ - مدخل ٢ ج شارع ٥
تليفون : ٣/٤٦٢٤٤٢٤-٤٦٢٤٠٢٥-٤٦٢٤١٢٦-٤٦٢٤١٢٧
فاكس : ٣/٤٦٢٤٢٩١



www.UnitelEgypt.com

[f](https://www.facebook.com/UnitelEgypt) [YouTube](https://www.youtube.com/UnitelEgypt) [/UnitelEgypt](https://www.instagram.com/UnitelEgypt)

Sales@UnitelEgypt.com

Info@UnitelEgypt.com